

CENTRAL COLORADO REGIONAL AIRPORT

BUENA VISTA, COLORADO

AIRPORT MASTER PLAN



AIRPORT LAYOUT PLAN EXHIBITS

| EXHIBIT | TITLE |
|---------|---|
| I | AIRPORT LAYOUT PLAN |
| II | BUILDING AREA LAYOUT |
| III | FAR PART 77 AIRPORT AIRSPACE DRAWING |
| IV | RUNWAY 15/33 APPROACH PLAN AND PROFILE INNER PORTION OF THE APPROACH PLAN AND PROFILE RUNWAY 15/33 |
| V | LAND USE PLAN |
| VI | EXHIBIT "A" AIRPORT PROPERTY MAP |



SPONSORED BY:



FEDERAL AVIATION ADMINISTRATION



TOWN OF BUENA VISTA COLORADO

PREPARED BY:

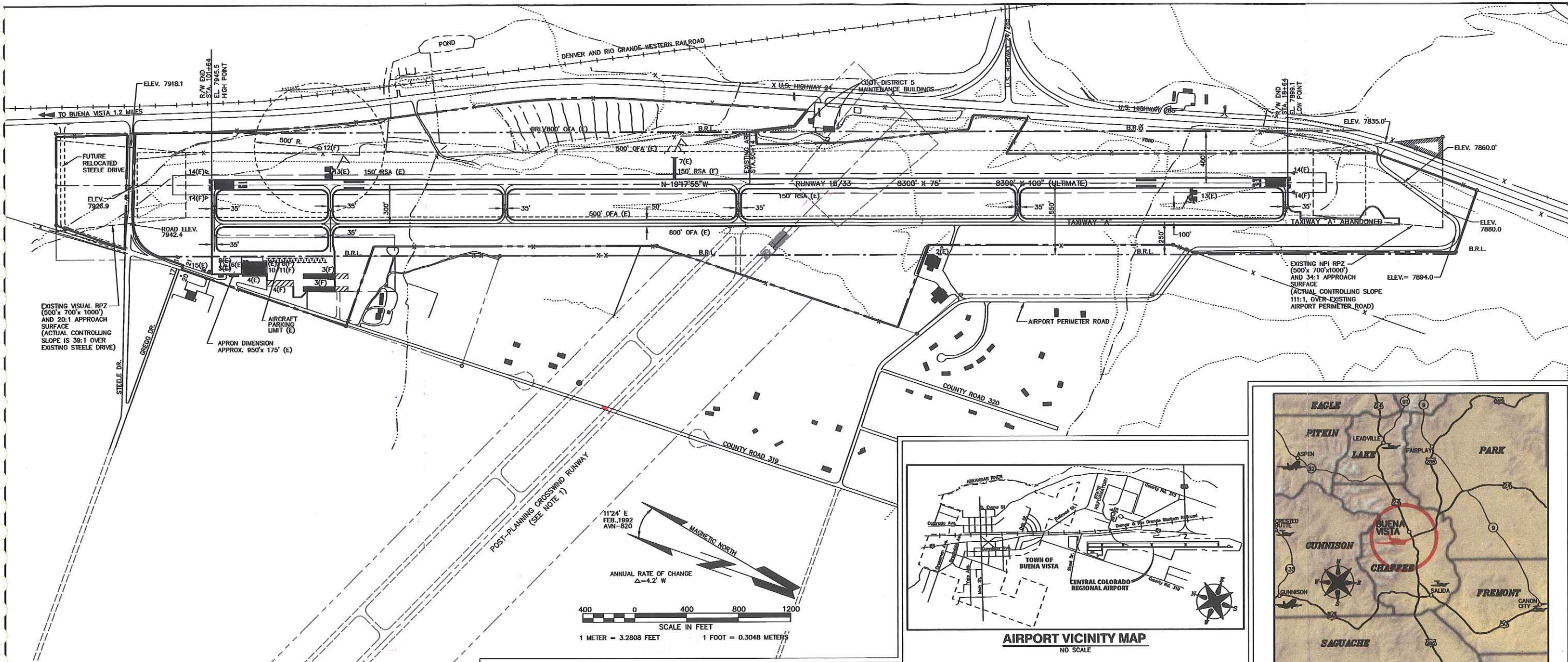


Washington

Infrastructure Services, Inc.

PHONE (303) 843-2000 FAX (303) 843-3133

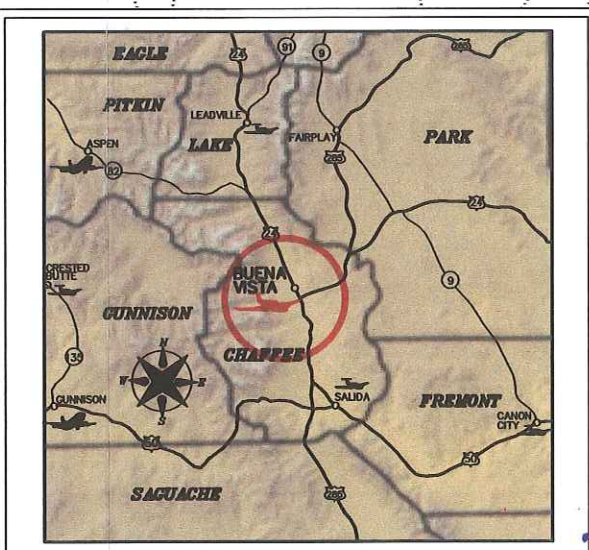
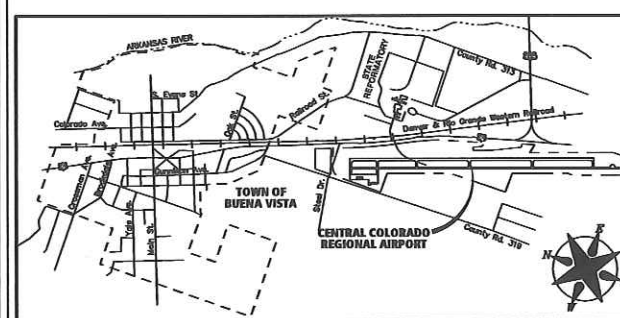
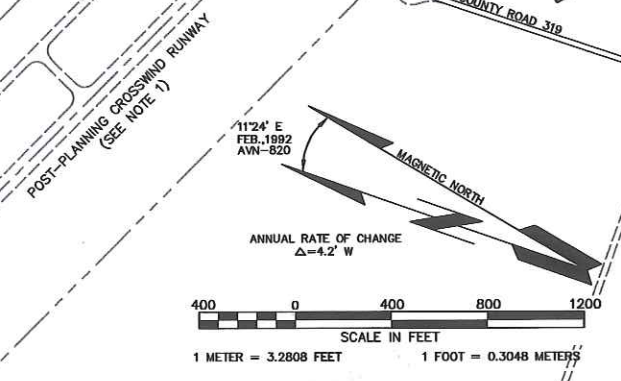
DATE: MAY, 2004



EXISTING VISUAL RPZ (500' x 700' x 1000') AND 20:1 APPROACH SURFACE (ACTUAL CONTROLLING SLOPE IS 39:1 OVER EXISTING STEELE DRIVE)

APRON DIMENSION APPROX. 950' x 175' (E)

EXISTING NPI RPZ (500' x 700' x 1000') AND 34:1 APPROACH SURFACE (ACTUAL CONTROLLING SLOPE 111:1 OVER EXISTING AIRPORT PERIMETER ROAD)



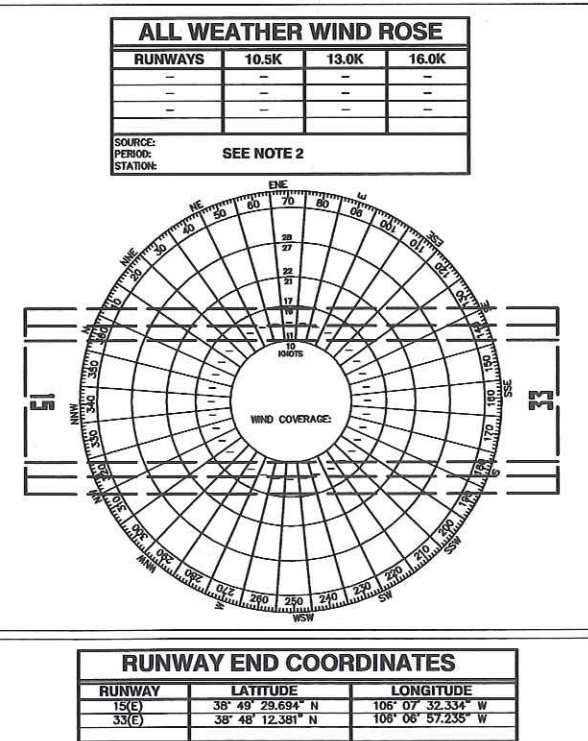
- NOTES:**
- CROSSWIND RUNWAY IS DEPICTED FOR ULTIMATE DEVELOPMENT FINAL ALIGNMENT TO BE DETERMINED FOLLOWING THE WIND ANALYSIS.
 - WIND DATA WILL BE COLLECTED BY CDOT FOR A PERIOD OF AT LEAST 12 MONTHS. A FUTURE ALP UPDATE WILL TABULATE WIND DATA FOLLOWING COLLECTION PERIOD.

AIRPORT FACILITY LIST
 (E) EXISTING (F) FUTURE (R) TO BE REMOVED

- FBO HANGAR (E)(F)
- PRIVATE HANGAR (E)(F)
- T-HANGAR (E)(F)
- AUTO PARKING (E)(F)
- FUEL FARM (E)
- ADMINISTRATIVE OFFICE (E)
- WIND CONE AND SEGMENTED CIRCLE (E)
- AIRCRAFT PARKING (E)(F)
- COMMUTER TERMINAL BUILDING (F)
- ARRF BUILDING (F)
- SNOW REMOVAL EQUIPMENT BUILDING (F)
- AWOS (F)
- PRECISION APPROACH PATH INDICATOR (PAPI) SYSTEMS (E)
- RUNWAY END IDENTIFIER (REIL) LIGHTS (F)
- AIRPORT ROTATING BEACON (E)

| | RUNWAY - 15 | | RUNWAY - 33 | |
|----------------------------------|-----------------|--------------|-----------------|--------------|
| | EXISTING | FUTURE | EXISTING | FUTURE |
| APPROACH VISIBILITY MINIMUM | 1 MILE | SAME | 1 MILE | SAME |
| APPROACH SURFACE | 20:1 | - | 34:1 | SAME |
| RUNWAY WIDTH (FT.) | 75' | SAME | 75' | SAME |
| RUNWAY LENGTH (FT.) | 8300' | SAME | 8300' | SAME |
| PAVEMENT TYPE | ASPHALT | SAME | ASPHALT | SAME |
| PAVEMENT DESIGN STRENGTH (LBS) | | | | |
| - SINGLE WHEEL GEAR (SWG) | 12,500 | 12,500 | 12,500 | 12,500 |
| - DUAL WHEEL GEAR (DWG) | 12,500 | 12,500 | 12,500 | 12,500 |
| RUNWAY LIGHTING | MIRL | SAME | MIRL | - |
| RUNWAY MARKING | NPI | SAME | NPI | SAME |
| PERCENT GRADIENT | 0.57% | 0.57% | 0.57% | 0.57% |
| MAXIMUM GRADE WITHIN R/W LENGTH | 0.8% | SAME | 0.8% | SAME |
| LINE-OF-SIGHT REQUIREMENTS | MEETS STANDARDS | SAME | MEETS STANDARDS | SAME |
| VISUAL APPROACH AIDS | PAPI | SAME | PAPI | SAME |
| INSTRUMENT APPROACH AIDS | GPS | SAME | GPS | SAME |
| AIRPORT REFERENCE CODE (ARC) | B-II | SAME | B-II | SAME |
| CRITICAL AIRCRAFT | BEECH C-90 | CITATION CJ2 | BEECH C-90 | CITATION CJ2 |
| - APPROACH SPEED (KTS) | 110 | 100 | 110 | 100 |
| - WINGSPAN (FEET) | 56.2' | 49.5' | 56.2' | 49.5' |
| - WEIGHT (LBS) | 9,650 | 12,375 | 9,650 | 12,375 |
| SAFETY AREA DIMENSIONS (FT) | | | | |
| - WIDTH | 150' | SAME | 150' | SAME |
| - LENGTH BEYOND END | 300' | SAME | 300' | SAME |
| OBJECT FREE AREA DIMENSIONS (FT) | | | | |
| - WIDTH | 500' | SAME | 500' | SAME |
| - LENGTH BEYOND R/W END | 600' | SAME | 600' | SAME |
| RUNWAY ELEVATIONS (FT.) | | | | |
| RUNWAY END | 7,945.5 | SAME | 7,899.1 | SAME |

| | EXISTING | FUTURE |
|------------------------------|--------------------------------|---------|
| AIRPORT ELEVATION (FT) | 7945.5' | 7945.5' |
| AIRPORT REFERENCE POINT | | |
| - LATITUDE | 38° 48' 50.6" N | SAME |
| - LONGITUDE | 106° 07' 11.8" W | SAME |
| MEAN MAX DAILY TEMPERATURE | 79.6° F | SAME |
| AIRPORT REFERENCE CODE | B-II | SAME |
| NPIAS SERVICE LEVEL | GENERAL AVIATION | SAME |
| TAXIWAY LIGHTING | MTL | SAME |
| AIRPORT AND TERMINAL NAVAIDS | ROTATING BEACON WIND SOCK, GPS | SAME |



LEGEND

| ITEM | EXISTING | FUTURE |
|--------------------------------|----------|--------|
| DEVELOPMENT | - | - |
| PROPERTY LINE | - | - |
| FENCE | - | - |
| BUILDING RESTRICTION LINE | - | - |
| RUNWAY SAFETY AREA (RSA) | - | - |
| RUNWAY OBJECT FREE AREA (OFA) | - | - |
| CONTOUR | - | - |
| AIRPORT REFERENCE POINT | - | - |
| SECTION CORNER | - | - |
| WIND CONE | - | - |
| BUILDINGS | - | - |
| EASEMENT | - | - |
| RUNWAY PROTECTION ZONE (RPZ) | - | - |
| NAVIGATIONAL AID CRITICAL AREA | - | - |
| POST PLANNING DEVELOPMENT | - | - |

FAA APPROVAL

SUBJECT TO LETTER DATED: _____

FEDERAL AVIATION ADMINISTRATION
 DENVER AIRPORTS DISTRICT OFFICE

DATE: _____

CASE NO: _____

ACCEPTED: TOWN OF BUENA VISTA

DATE: _____

STAGE OF PLANS

BVA-ALP-P1.dwg
 CADD FILE NO.

| REV. | DATE | DESCRIPTION | APP. |
|------|------|-------------|------|
| | | | |
| | | | |
| | | | |
| | | | |

Washington
 Infrastructure Services, Inc.
 PHONE (303) 843-2000 FAX (303) 843-3131

CENTRAL COLORADO REGIONAL AIRPORT
 BUENA VISTA, COLORADO

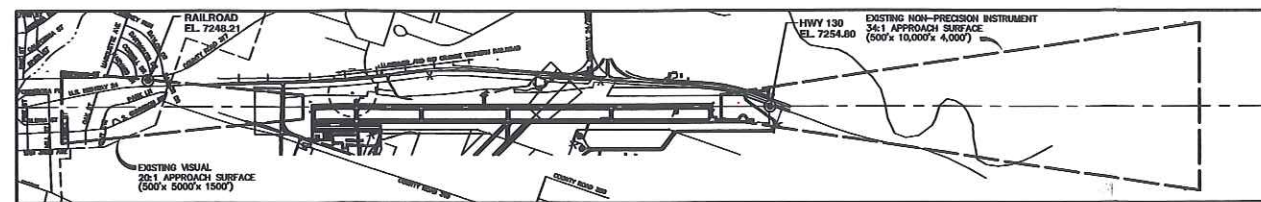
AIRPORT LAYOUT PLAN

DESIGNER: K.O.C. PROJ. LEAD: J.F.S. APPROVED: N.E.R.
 CADD TECH: D.C.C. CHECKED: C.M.G.

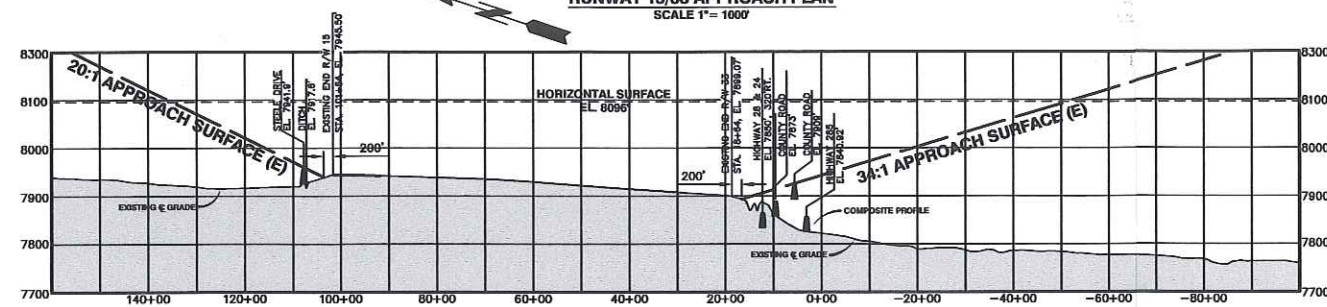
DATE: MAY, 2004

EXHIBIT I

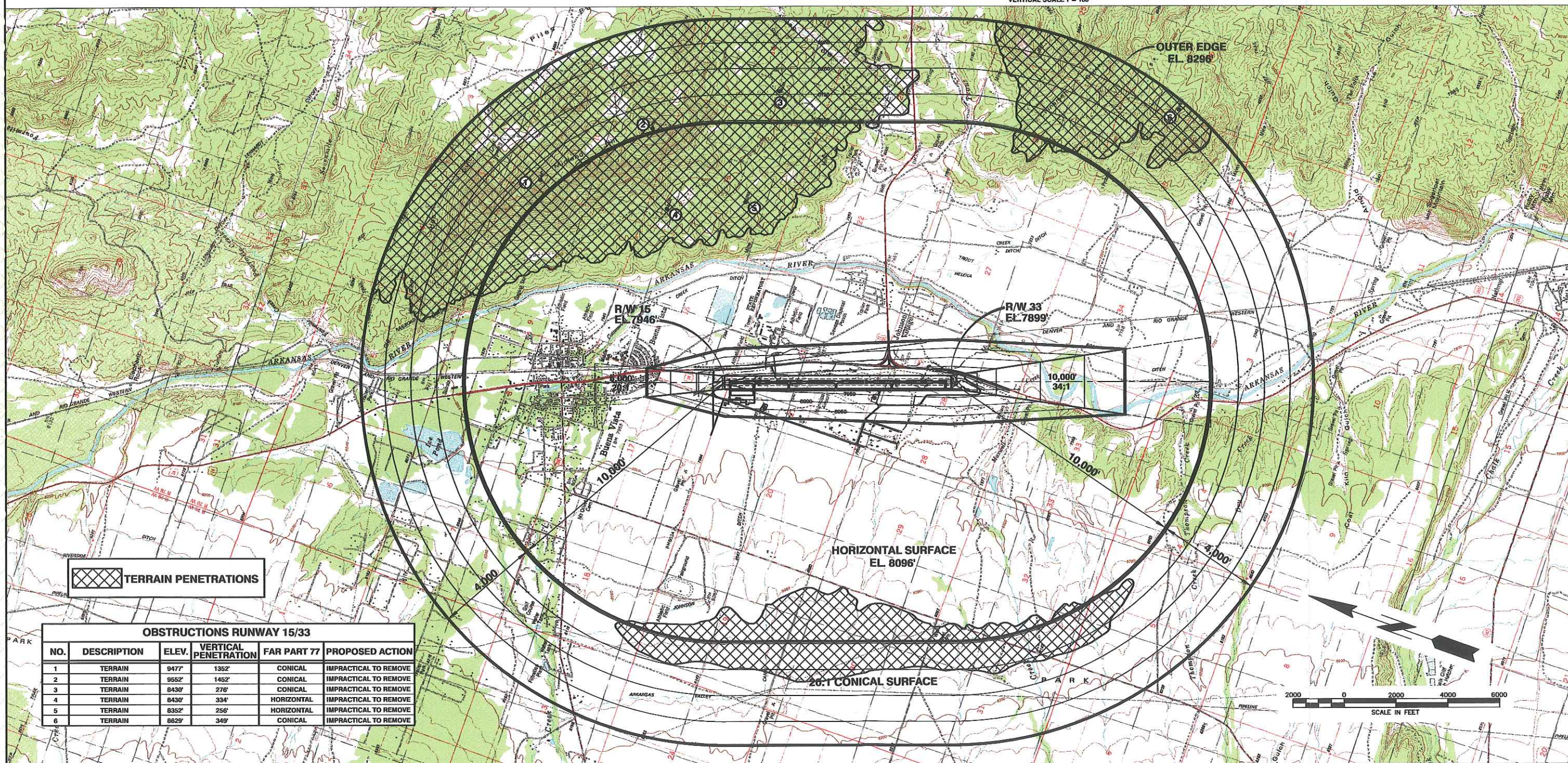
| OBSTRUCTIONS RUNWAY 15/33 | | | | | |
|---------------------------|-------------|-----------|-------------|---------|-------------|
| NO. | DESCRIPTION | ELEVATION | PENETRATION | SURFACE | DISPOSITION |
| NO CLOSE IN OBSTRUCTIONS | | | | | |



RUNWAY 15/33 APPROACH PLAN
SCALE 1" = 1000'



RUNWAY 15/33 APPROACH PROFILE
HORIZONTAL SCALE 1" = 1000'
VERTICAL SCALE 1" = 100'



TERRAIN PENETRATIONS

| OBSTRUCTIONS RUNWAY 15/33 | | | | | |
|---------------------------|-------------|-------|----------------------|-------------|-----------------------|
| NO. | DESCRIPTION | ELEV. | VERTICAL PENETRATION | FAR PART 77 | PROPOSED ACTION |
| 1 | TERRAIN | 9477' | 1352' | CONICAL | IMPRACTICAL TO REMOVE |
| 2 | TERRAIN | 9552' | 1452' | CONICAL | IMPRACTICAL TO REMOVE |
| 3 | TERRAIN | 8430' | 276' | CONICAL | IMPRACTICAL TO REMOVE |
| 4 | TERRAIN | 8430' | 334' | HORIZONTAL | IMPRACTICAL TO REMOVE |
| 5 | TERRAIN | 8352' | 256' | HORIZONTAL | IMPRACTICAL TO REMOVE |
| 6 | TERRAIN | 8629' | 349' | CONICAL | IMPRACTICAL TO REMOVE |

| | |
|--|--|
| | |
|--|--|

| REV. | DATE | DESCRIPTION | APP. |
|------|------|-------------|------|
| | | | |

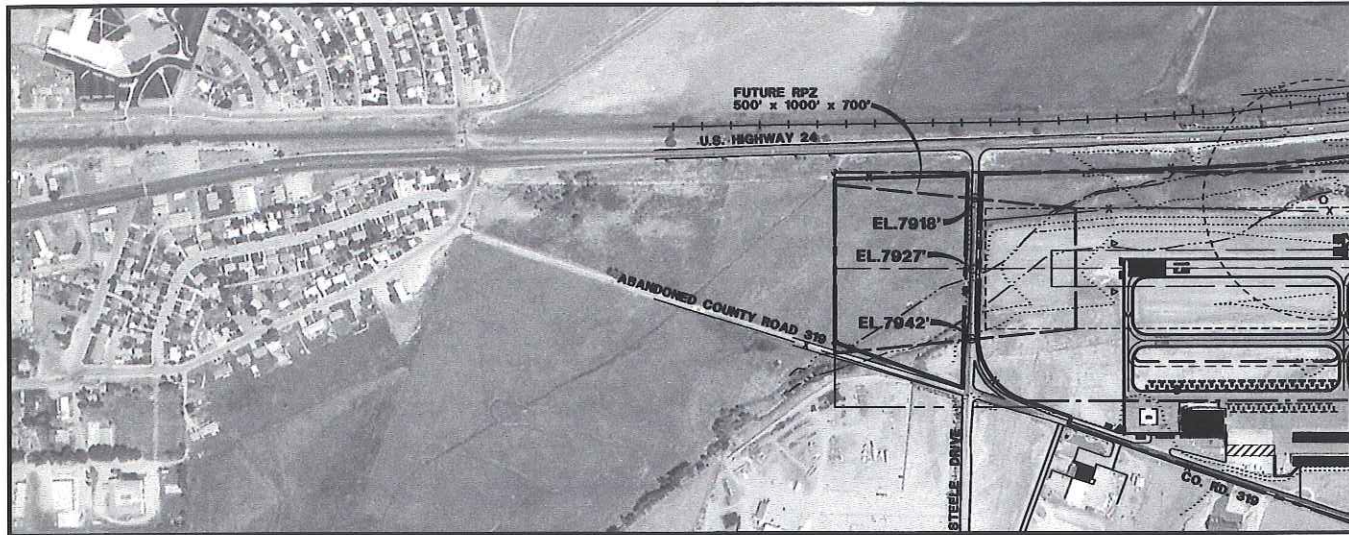
Washington
Infrastructure Services, Inc.
PHONE (303) 843-2000 FAX (303) 843-3131

CENTRAL COLORADO REGIONAL AIRPORT
BUENA VISTA, COLORADO

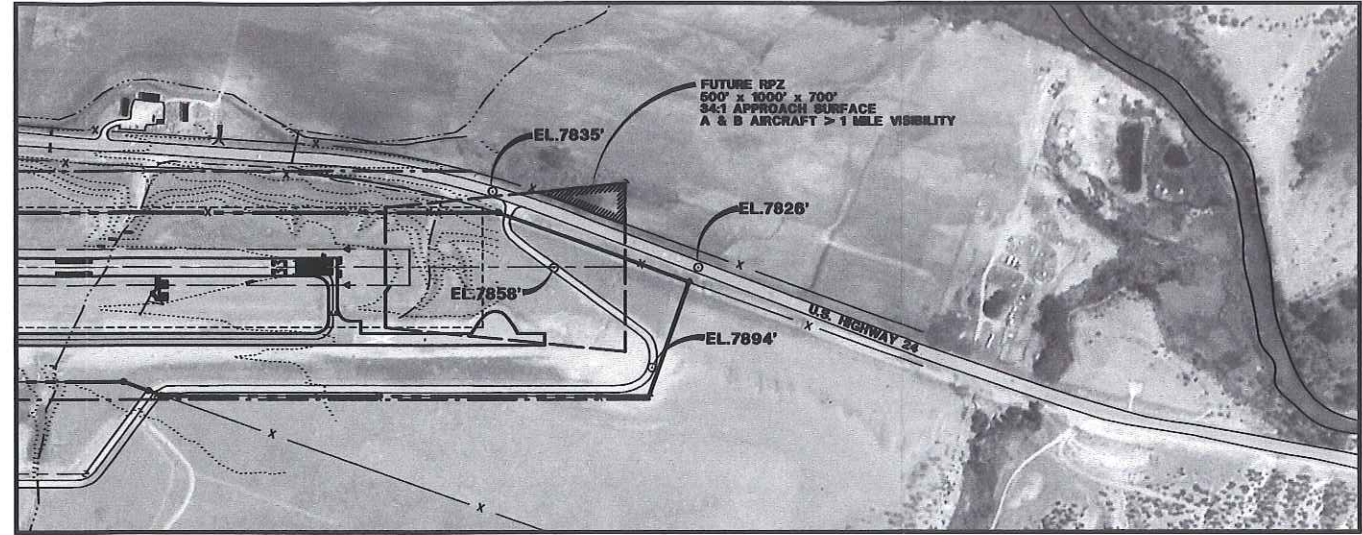
AIRPORT AIRSPACE DRAWING
(FAR PART 77 SURFACES)

DESIGNER: K.O.C. PROJ. LEAD: J.F.S. APPROVED: N.E.R.
CADD TECH: D.C.C. CHECKED: C.M.G.

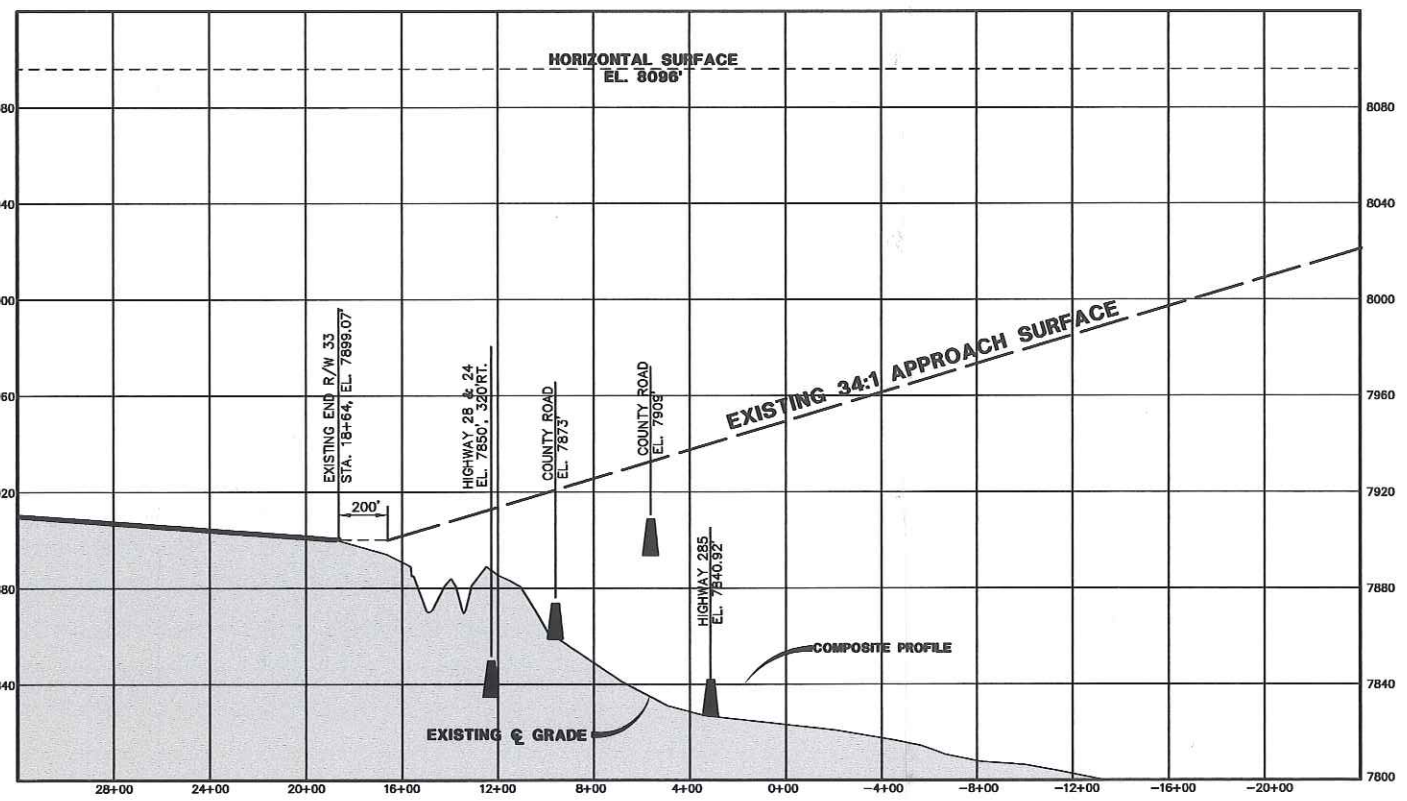
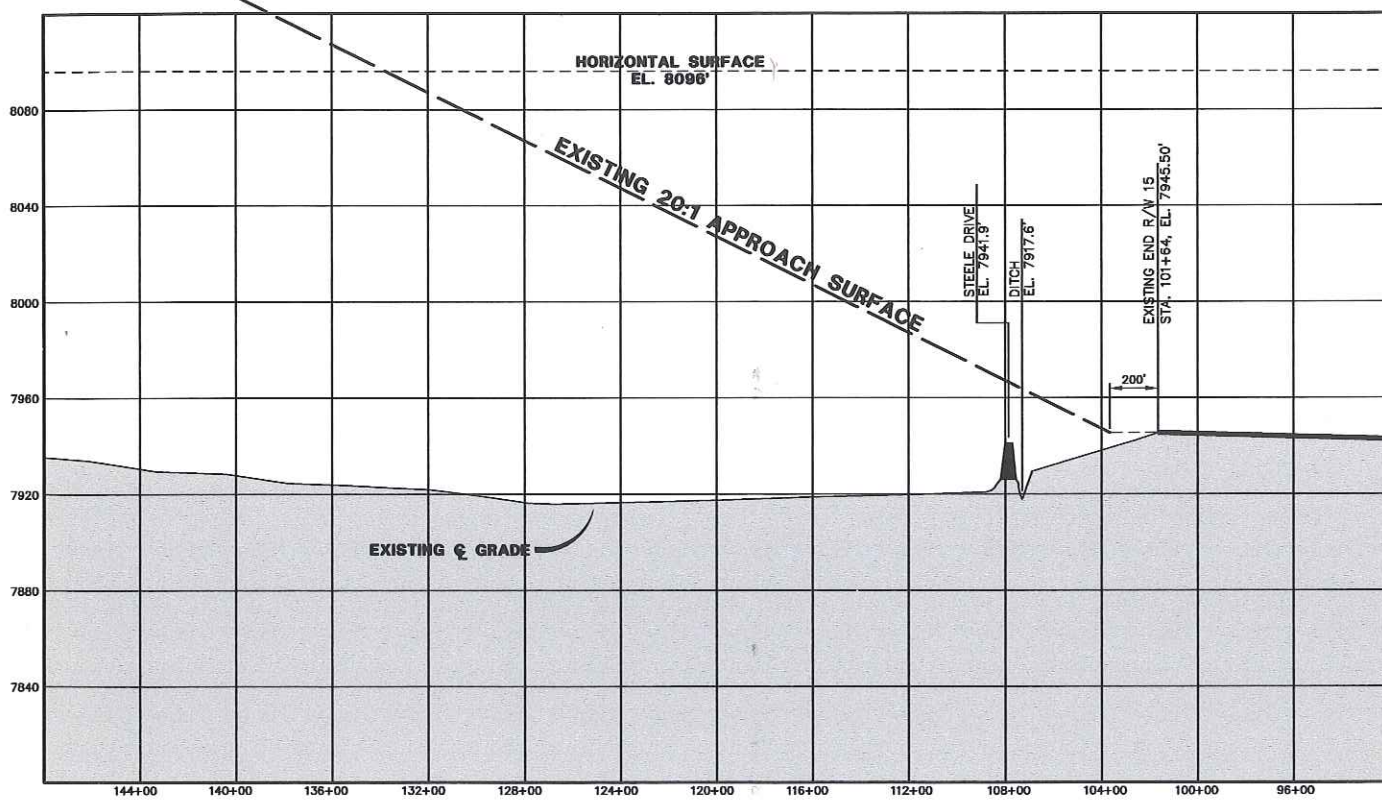
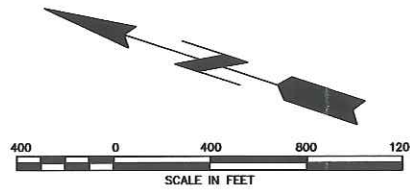
DATE: MAY, 2004
EXHIBIT III



RUNWAY 15 PLAN

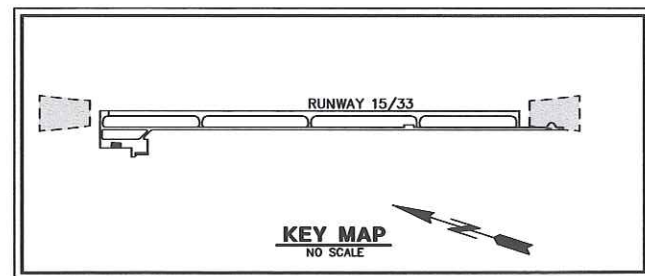


RUNWAY 33 PLAN



RUNWAY 15/33 PROFILE

HORIZONTAL SCALE 1" = 400'
VERTICAL SCALE 1" = 40'



| OBSTRUCTIONS RUNWAY 15/33 | | | | | |
|---------------------------|-------------|-----------|-------------|-----------------|-----------------|
| NUMBER | DESCRIPTION | ELEVATION | PENETRATION | PART 77 SURFACE | PROPOSED ACTION |
| NO OBSTRUCTIONS | | | | | |

| REV. | DATE | DESCRIPTION | APP. |
|------|------|-------------|------|
| | | | |
| | | | |
| | | | |
| | | | |

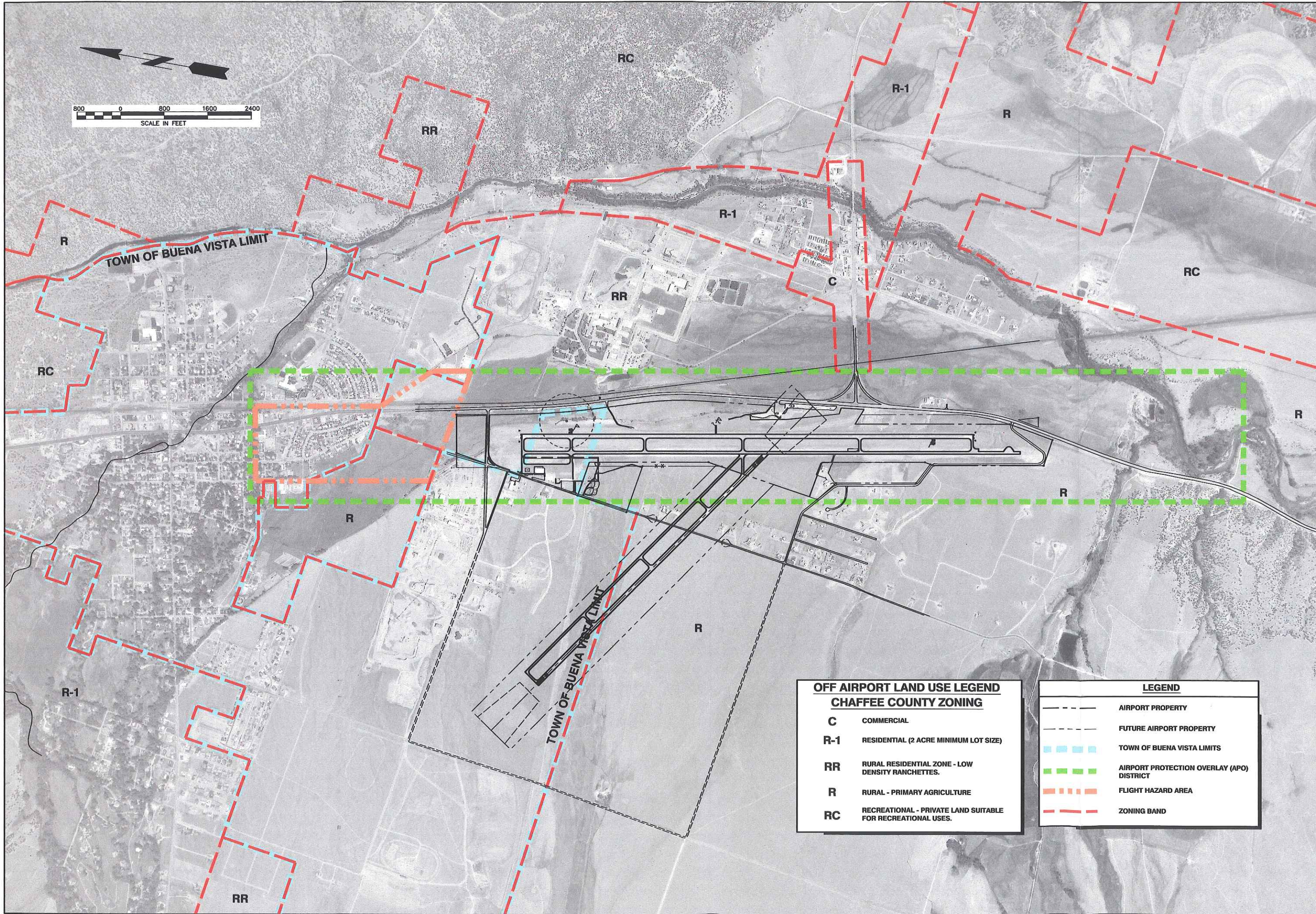
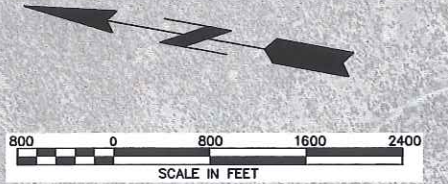
Washington
Infrastructure Services, Inc.
PHONE (303) 843-2000 FAX (303) 843-3131

CENTRAL COLORADO
REGIONAL AIRPORT
BUENA VISTA, COLORADO

INNER PORTION OF THE APPROACH
PLAN AND PROFILE
RUNWAY 15/33

DESIGNER K.O.C. PROJ. LEAD J.F.S. APPROVED N.E.R.
CADD TECH. D.C.C. CHECKED C.M.G.

DATE: MAY, 2004
EXHIBIT IV



| | |
|------------|---|
| C | COMMERCIAL |
| R-1 | RESIDENTIAL (2 ACRE MINIMUM LOT SIZE) |
| RR | RURAL RESIDENTIAL ZONE - LOW DENSITY RANCHETTES. |
| R | RURAL - PRIMARY AGRICULTURE |
| RC | RECREATIONAL - PRIVATE LAND SUITABLE FOR RECREATIONAL USES. |

| | |
|--|---|
| | AIRPORT PROPERTY |
| | FUTURE AIRPORT PROPERTY |
| | TOWN OF BUENA VISTA LIMITS |
| | AIRPORT PROTECTION OVERLAY (APO) DISTRICT |
| | FLIGHT HAZARD AREA |
| | ZONING BAND |

| BVA-LAND-P.dwg CADD FILE NO. | STAGE OF PLANS |
|---------------------------------|----------------|
| | |
| | |
| | |
| | |
| | |
| | |
| | |
| | |
| | |
| | |
| | |
| | |
| | |
| | |
| | |
| | |
| | |
| | |
| | |
| | |

Washington
Infrastructure Services, Inc.
PHONE (303) 843-2000 FAX (303) 843-3131

CENTRAL COLORADO
REGIONAL AIRPORT
BUENA VISTA, COLORADO

| | | | | | |
|------------|--------|------------|--------|----------|--------|
| DESIGNER | K.O.C. | PROJ. LEAD | J.F.S. | APPROVED | N.E.R. |
| CADD TECH. | D.C.C. | CHECKED | C.M.G. | | |

DATE: MAY, 2004
EXHIBIT V

